



IPTC Standards

IPTC Core Schema for XMP

Version 1.0

Supplemental documentation:

Application Note:

Fixing value sharing problems

with custom panels

in Adobe Photoshop 7.1 and CS 1 (8.0)

Document Revision 1



Copyright © 2005 by IPTC, the International Press Telecommunications Council. All rights reserved.

IPTC address:

Postal mail: Royal Albert House, Sheet Street, Windsor, Berkshire, SL4 1BE, United Kingdom

Web: www.iptc.org

email: office@iptc.org

This project intends to use materials that are either in the public domain or are available by the permission for their respective copyright holders.

Permissions of copyright holder will be obtained prior to use of protected material.

All materials of this IPTC standard covered by copyright shall be licensable at no charge.

Document file name (+ Word file extension “.doc”): **Ipct4xmpCore_1.0-doc-ANcs1panelShareFix_1.doc**

Document URN: **urn:iptc:std:Iptc4xmpCore:1.0:doc:ANcs1panelShareFix:1**

(More information on IPTC URNs in RFC 3937)

Specification Versioning History

Version	Issue Date	Approved by	Remark
1	2004-10-08	IPTC Standards Committee	

Document Revision History

Revision	Issue Date	Author (revised by)	Remark
1	2005-04-26	Michael Steidl	



Table of contents

1	The “value sharing problem” with custom panels	3
2	The fix = a workaround.....	3
2.1	Workaround approach.....	3
2.2	Installing the workaround	3
3	Reference and support.....	5
4	Appendix 1: Panel location guide	5

1 The “value sharing problem” with custom panels

After the release of the “IPTC Core” custom panels for Adobe’s Creative Suite a severe problem was detected:

- As explained in the specification document and the “CS panel User Guide” for the IPTC Core this schema shares XMP properties with panels built into Photoshop 7.1 and CS.
- When Photoshop’s “File Info” saves changes made to XMP (triggered either by clicking OK or saving a template file), it sometimes thinks that fields which are “shared” with the IPTC panels are blank – saving no value to the XMP packet.
This can occur for the built-in Description panel or the built-in Origin panel.
- This problem ONLY applies to Photoshop 7.1 and Photoshop CS 1 (= version 8), but not to the latest release of Photoshop CS 2.
- General note: this problem may occur using any custom panel sharing XMP properties with the built-in panels, it is not restricted to the IPTC Core custom panels.

2 The fix = a workaround

2.1 Workaround approach

As this problem is based on Photoshop’s (7.1 and CS1) software code no fix to this problem is available at the code level – but a workaround:

- The approach is to disable the access from the built-in panels to XMP properties shared between the built-in panels and the additional IPTC Core panels – and only to these!
- To that end Adobe provided two custom panels to be installed additionally to Photoshop. These two panels replace the built-in Description and Origin panels and hides the fields of all XMP properties shared with the IPTC Core – only very few are still available.
- Access to the underlying XMP properties is still available!
But only by using the IPTC Core panels.
- The only restriction from this workaround is not having available anymore the “Today” button to set the “Date Created” easily.

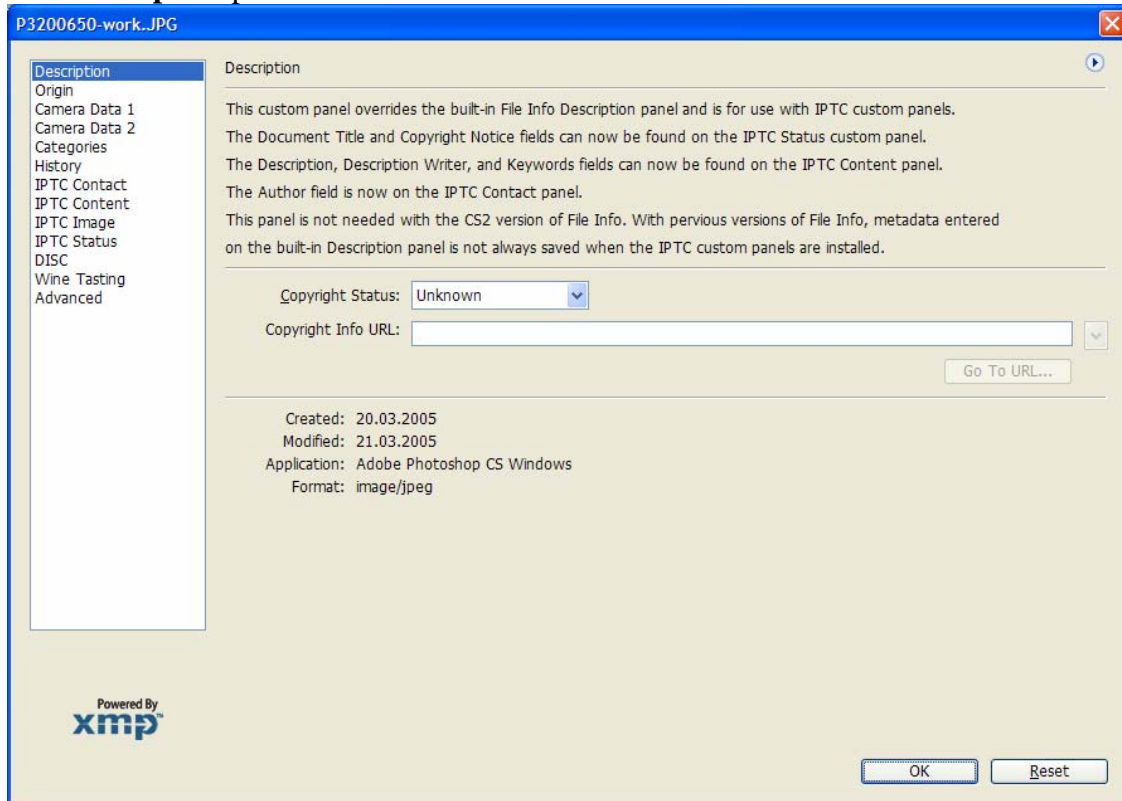
2.2 Installing the workaround

1. Download the “Share fix” package from <http://www.iptc.org/IPTC4XMP>
2. Unzip the package to a temporary work directory
3. The package provides:
 - two Photoshop custom panel files:
 - Description4IPTCs.txt – to overrule the built-in Description panel
 - Origin4IPTCs.txt – to overrule the built-in Origin panel
 - an installer program for Windows: IPTCCore-ShareFix-Photoshop-Panels.exe
4. Now install these two panels by either
 - using the installer program on a Windows PC
 - or copying the files to the appropriate location by hand (see: Appendix 1)

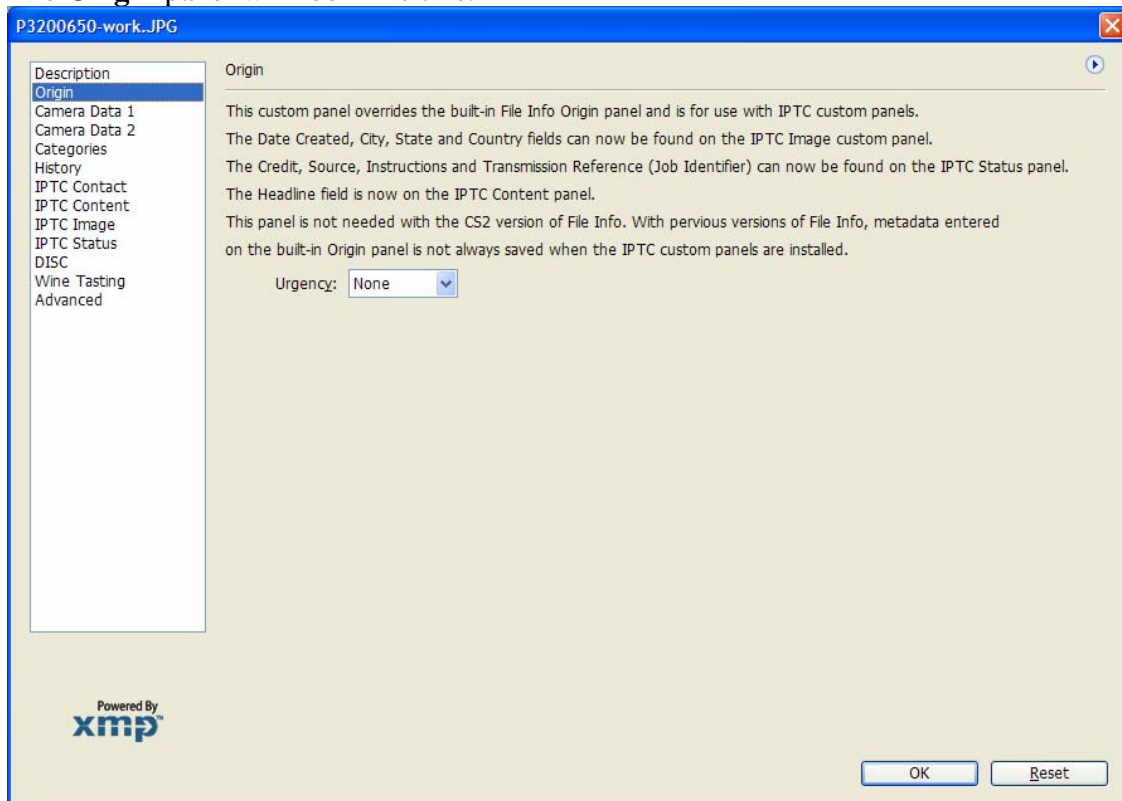


After having installed these two panel files, these two built-in panels of Photoshop will change their appearance to the user:

The **Description** panel will look like this:



The **Origin** panel will look like this:





3 Reference and support

Reference documents for the “IPTC Core XMP Schema” and related technical matters.

“IPTC Core XMP Schema” Version 1.0 specification:

This version and any updates can be obtained from: <http://www.iptc.org/IPTC4XMP>

“IPTC Core – Custom Panels User Guide”

The latest version can be obtained from: <http://www.iptc.org/IPTC4XMP>

Support sites for the “IPTC Core XMP Schema”:

Website: <http://www.iptc.org/IPTC4XMP>

Public Yahoo discussion forum: <http://groups.yahoo.com/group/iptc4xmp>

4 Appendix 1: Panel location guide

This section was copied from the “Custom Panels User Guide”, authored by David Riecks.

The following paths are correct for current operating systems and the Adobe Creative Suite of applications such as Adobe Photoshop CS. The items not in **bold** might be dependent upon the language of the installed operating system.

On a Macintosh OS X system the custom panel files may be installed in either of the following locations:

Installing panels for all users of this PC:

{Root Volume} /Library/Application Support/Adobe/XMP/Custom File Info Panels

Installing panels for the current user only:

{Home Directory}/Users/<user name>/Library/Application Support/Adobe/XMP/Custom File Info Panels

On Windows XP the files are installed in either of the following locations (substitute the appropriate drive letter for the “C” drive if necessary):

Installing panels for all users of this PC:

C:\Program Files\Common Files\Adobe\XMP\Custom File Info Panels

Installing panels for the current user only:

C:\Documents and Settings\<user name>\Application Data\Adobe\XMP\Custom File Info Panels

=== END of document ===